

This catalog covers:
FD620D-□S12

GRID NO. This grid covers:
A-01 TITLE

PARTS CATALOG

4-STROKE ENGINE

FD620D

| PRODUCT CODE | NOTE |
|---------------------|------------------|
| FD620D-FS12 | POWER-CARRIER |
| FD620D-GS12 | (VEHICLE) |
| FD620D- <u>HS12</u> | <u>NEW HEADS</u> |
| | |
| | |
| | |



Engine Division
P.O. Box 888285
Grand Rapids, MI 49588-8285

PARTS CATALOG INTRODUCTION

This parts catalog lists parts and sub-assemblies provided as service parts. When it becomes necessary to replace parts, always use KAWASAKI GENUINE PARTS which have passed strict inspection which guarantees quality and performance.

1. HOW TO ORDER PARTS

- When ordering the parts, be sure to use the parts catalog corresponding to the product code. Check the product revision codes on the product and the catalog.
Product Code (example) : FA130D-AA00
Product Revision Code
- Specify the part code (all digits) exactly as listed in this catalog on your parts order.
- The parts not shown in the illustrations of this catalog are not sold separately; only the complete units or next higher assemblies illustrated are supplied as the service parts.

2. EXPLANATION OF PARTS CATALOG FORMAT

This catalog covers: **FH500V-□S14** GRID NO. **B-03** This grid covers: **CYLINDER/CRANKCASE**

| Ref. No. | Part No. | Description | A | B | Quantity |
|----------|------------|------------------------|----|----|----------|
| 11004 | 11004-7001 | GASKET-HEAD | 2 | 2 | 2 |
| 11006 | 11006-7001 | HEAD-COMP-CYLINDER,#1 | 1 | 1 | 1 |
| 11008 | 11008-7002 | HEAD-COMP-CYLINDER,#2 | 1 | 1 | 1 |
| 11022 | 11022-7001 | CASE-ROCKER | 2 | 2 | 2 |
| 11050 | 11050-7001 | GASKET/ROCKER CASE | 2 | 2 | 2 |
| 11060A | 11060-7008 | GASKET/CRANKCASE COVER | 1 | 1 | 1 |
| 11062B | 11062-7015 | GASKET/BREATHER | 1 | 1 | 1 |
| 13271 | 13271-7C16 | PLATE | 1 | 1 | 1 |
| 13271A | 13271-7C16 | COVER/BREATHER | 1 | 1 | 1 |
| 14096 | 14096-7001 | PIH | 1 | 1 | 1 |
| 49015 | 49015-6215 | COVER-CRANKCASE | 1 | 1 | 1 |
| 49109 | 49109-7002 | ELEMENT-BREATHER | 1 | 1 | 1 |
| 49130 | 49130-5419 | CRANKCASE-COMP | 1 | 1 | 1 |
| 92023 | 92023-7003 | RING-SNAP | 2 | 2 | 2 |
| 92043 | 92043-7001 | PIH | 5 | 5 | 5 |
| 92048 | 92048-7001 | SEAL-CIL | 6 | 4 | 4 |
| 92049A | 92049-7002 | SEAL-CIL | 1 | 1 | 1 |
| 92049B | 92049-7004 | SEAL-CIL | 1 | 1 | 1 |
| 92049C | 92049-7005 | SEAL-CIL | 1 | 1 | 1 |
| 130 | 13030512 | BOLT-FLANGED | 4 | 4 | 4 |
| 190A | 13030540 | BOLT-FLANGED | 4 | 4 | 4 |
| 190B | 13030550 | BOLT-FLANGED | 17 | 17 | 17 |
| 190C | 13030575 | BOLT-FLANGED | 2 | 2 | 2 |
| 172 | 17250816 | BOLT-STUD | 4 | 4 | 4 |

4) Part Number

This is the key of your parts ordering. Three kinds of part number are used in this catalog.

- Structure 1
□□□□□□-□□□□□□-□□
□□□□□□-□□□□□□
Part Revision Code
- Structure 2
□□□□□□-□□□□□□-□□
Color Code for Painted Part
- Standard Hardware Number
(for bolts, nuts, washer, or the like)
□□□□□□□□
Size Code
Material and Surface Treatment Code
Item Code

5) Description and Additional Information

The part name, the location, the size, and the serial number as additional information, etc. are described here. Use them to find out and check the part required.

When a part number is changed without change of the product revision code and the changed parts are not interchangeable, the serial number of the product is noted as follows;

- (- FA130 - 100001) : Affected units are from beginning of the product of the product code up to and including this serial number.
(FA130 - 100002 -) : Affected units are from this serial number and above.
(FA130 - 100002 - FA130 - 110001) : Affected units are in this serial number range.

6) Quantity

The figure shows quantity of the part required at the indicated position on the illustration and for the specified product revision code.

The asterisk (*) on this column means the part can be used as the substitute on the product and is supplied until the stock is exhausted.

Note: Some small parts will be supplied by units.

Example: If six (6) bolts are ordered and the minimum quantity per unit is five (5), two (2), units of the bolt will be delivered.

7) Product Revision Code

This Code indicates an important change which affects the service parts interchangeability.

3. ABBREVIATIONS

| | | |
|--------------------|--------------------------|--------------------------------|
| #.....Number | FR.....Front | RH.....Right Hand |
| &.....And | G.....Gram | RPM.....Revolutions Per Minute |
| (+).....Plus | HEX.....Hexagonal | RR.....Rear |
| (-).....Minus | ID=.....Inside Diameter | STD.....Standard |
| 2ND.....Second | IN.....Inch | T.....Teeth |
| 3RD.....Third | L=.....Length | T=.....Thickness |
| 4TH.....Fourth | LH.....Left Hand | U/S.....Under Size |
| A.....Ampere | LWR.....Lower | UPP.....Upper |
| AR.....As Required | MM.....Millimeter | V.....Volt |
| ASSY.....Assembly | O/S.....Over Size | W.....Watt |
| CNT.....Center | OD=.....Outside Diameter | |
| COMP.....Complete | REF.....Reference | |

1) Product Code

This code describes the product code covered by this catalog. The product revision code, which is a part of the product code, is omitted.

2) Part Group Title

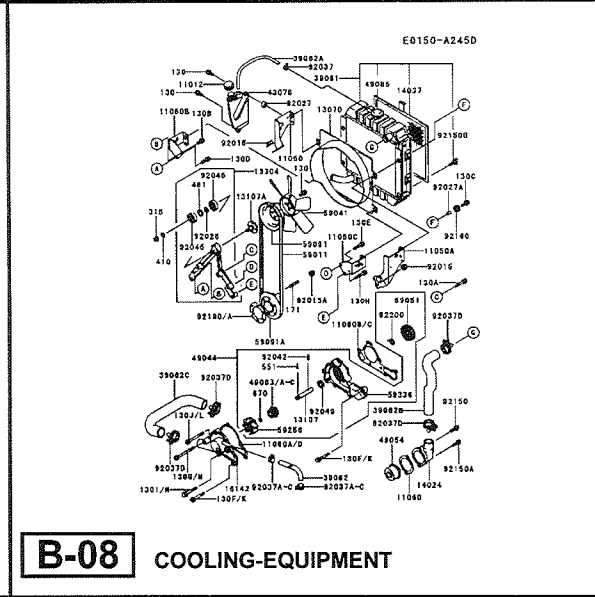
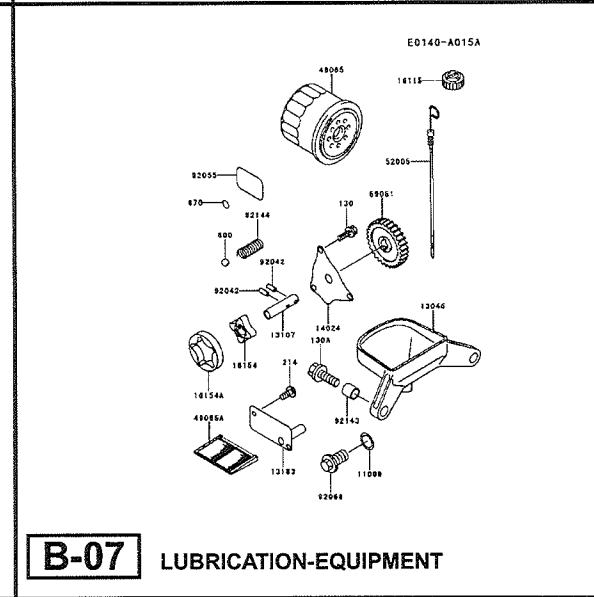
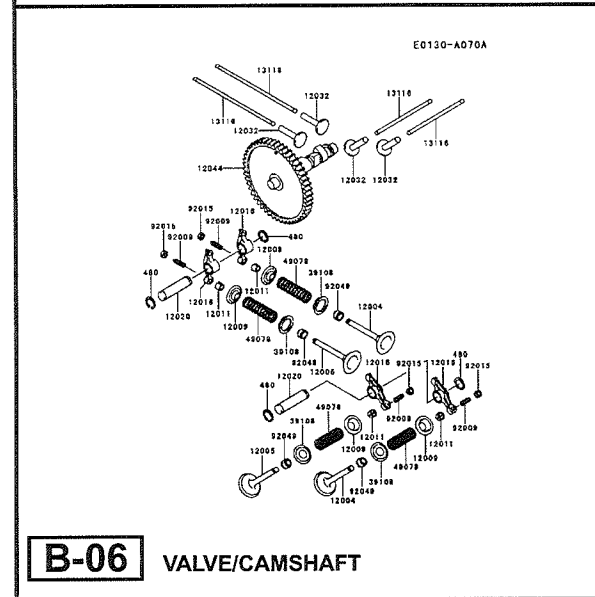
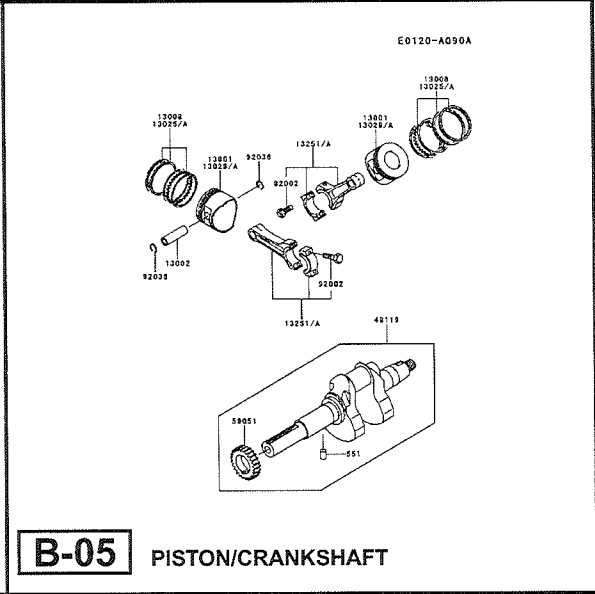
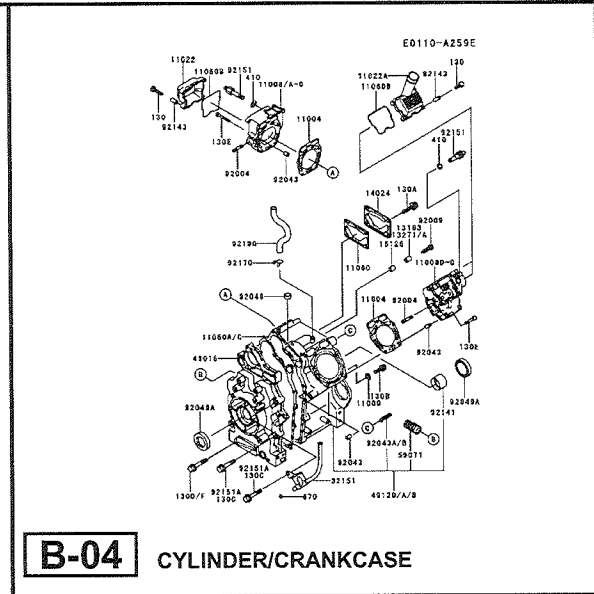
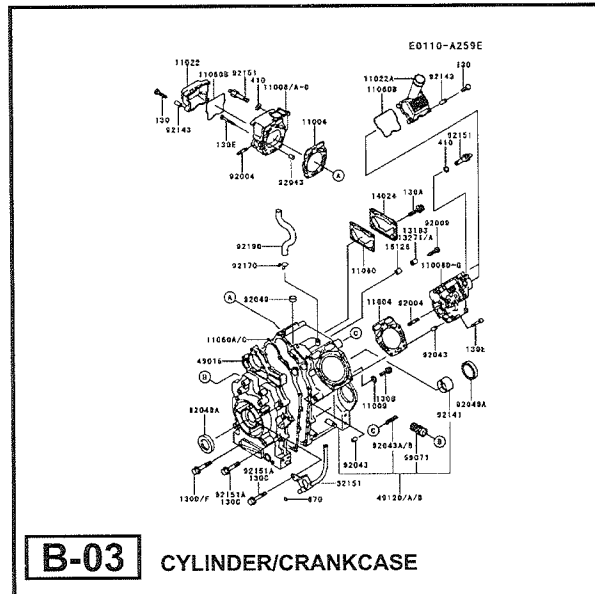
This title is the representative name for the group of parts illustrated on the page.

3) Reference Number

The reference numbers are shown on the illustration and the list as the link between them.

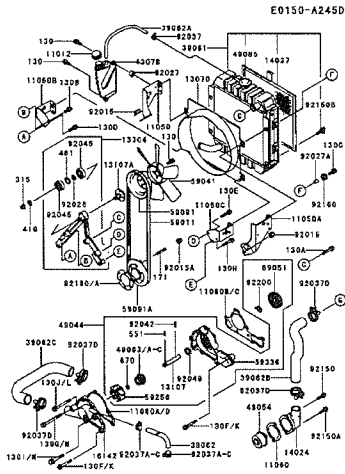
This catalog covers:
FD620D- □ S12

GRID NO. This grid covers:
B-01 PICTORIAL INDEX

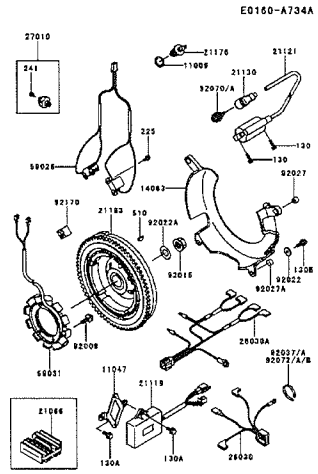


This catalog covers:
FD620D- □ S12

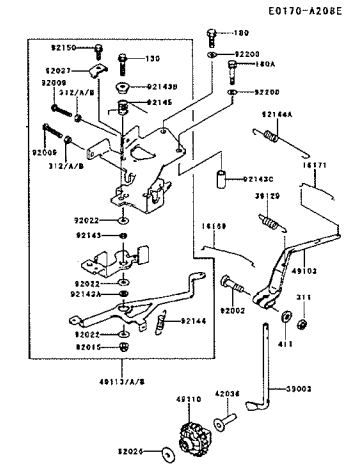
GRID NO. This grid covers:
B-02 PICTORIAL INDEX



B-09 COOLING-EQUIPMENT



B-10 ELECTRIC-EQUIPMENT



B-11 CONTROL-EQUIPMENT

This catalog covers:

FD620D- □ S12

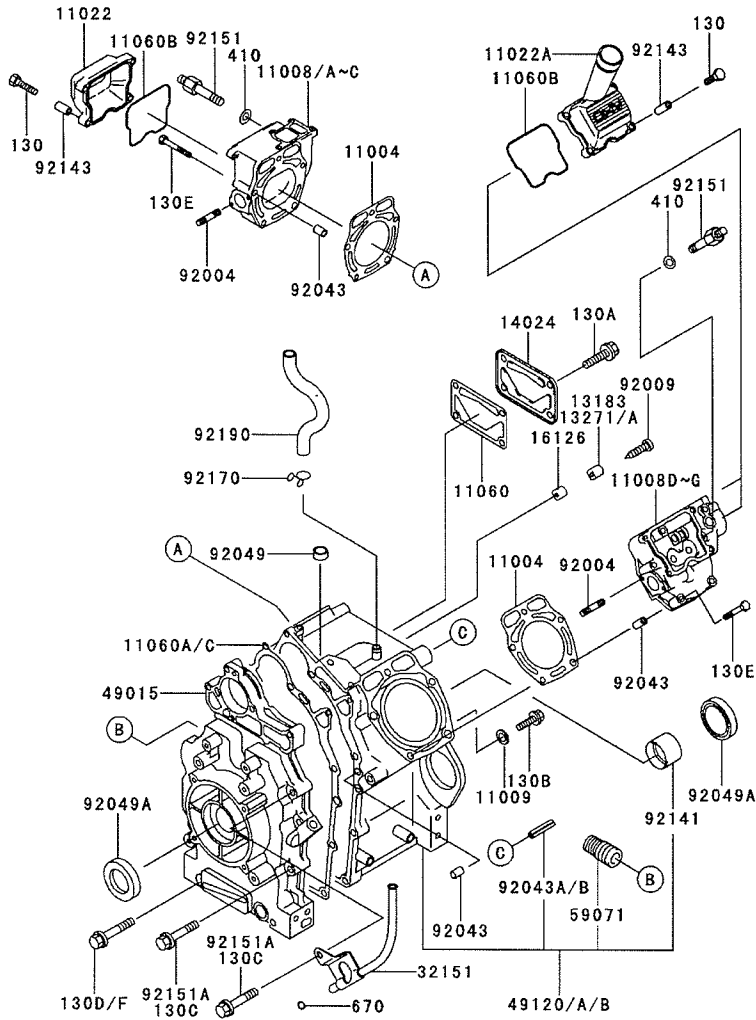
GRID NO.

B-03

This grid covers:

CYLINDER/CRANKCASE

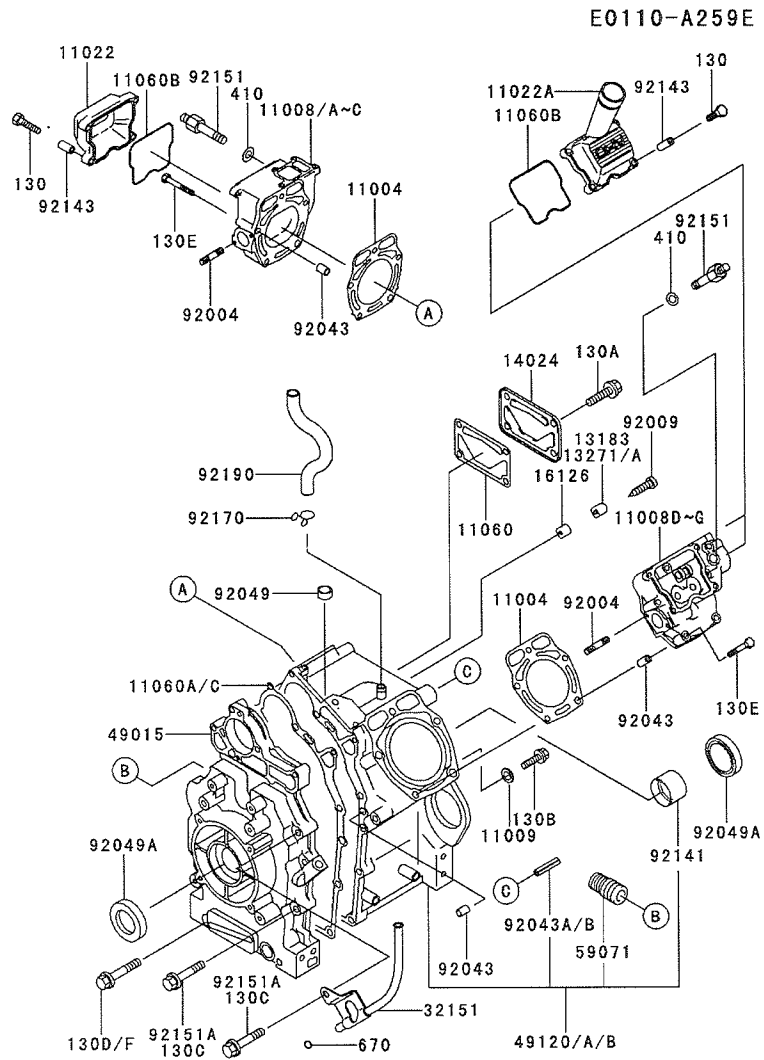
E0110-A259E



| Ref. No. | Part No. | Description | Quantity | | |
|----------|---------------|------------------------|----------|---|---|
| | | | F | G | H |
| 11004 | 11004-2107 | GASKET-HEAD | 2 | 2 | 2 |
| 11008 | 11008-2087 | HEAD-COMP-CYLINDER | * | | |
| | | (FD620-163307) | | | |
| 11008A | 11008-2135 | HEAD-COMP-CYLINDER | | 1 | |
| 11008B | 11008-2135 | HEAD-COMP-CYLINDER | 1 | | |
| | | (FD620-163308 - | | | |
| 11008C | 11008-2139 | HEAD-COMP-CYLINDER | | | 1 |
| | | (FD620-163307) | | | |
| 11008D | 11008-6015 | HEAD-COMP-CYLINDER | * | | |
| | | (FD620-163307) | | | |
| 11008E | 11008-6033 | HEAD-COMP-CYLINDER | | | 1 |
| 11008F | 11008-6036 | HEAD-COMP-CYLINDER | | 1 | |
| 11008G | 11008-6036 | HEAD-COMP-CYLINDER | 1 | | |
| | | (FD620-163308 - | | | |
| 11009 | 11009-3028 | GASKET | 2 | 2 | 2 |
| 11022 | 11022-2056 | CASE-ROCKER | 1 | 1 | 1 |
| 11022A | 11022-2063 | CASE-ROCKER | 1 | 1 | 1 |
| 11060 | 11060-2089 | GASKET | 1 | 1 | 1 |
| 11060A | 11060-2284 | GASKET,CRANKCASE COVER | 1 | | |
| 11060B | 11060-2332 | GASKET,ROCKER CASE | 2 | 2 | 2 |
| | | (FD620-163308 - | | | |
| 11060C | 11060-2449 | GASKET,CRANKCASE COVER | | 1 | 1 |
| 13183 | 13183-2120 | PLATE | * | | |
| 13271 | 13271-2054 | PLATE | | 1 | 1 |
| 13271A | 13271-2054 | PLATE | 1 | | |
| 14024 | 14024-2292 | COVER | 1 | 1 | 1 |
| 16126 | 16126-2146 | VALVE | 1 | 1 | 1 |
| 32151 | 32151-2031-9H | PIPE,OIL GAUGE | 1 | 1 | 1 |
| 49015 | 49015-6130 | COVER-CRANKCASE | 1 | 1 | 1 |
| 49120 | 49120-2287 | CRANKCASE-COMP | | 1 | 1 |
| 49120A | 49120-2287 | CRANKCASE-COMP | 1 | | |
| | | (FD620-163308 - | | | |
| 49120B | 49120-6075 | CRANKCASE-COMP | * | | |
| 59071 | 59071-2079 | JOINT | 1 | 1 | 1 |
| 92004 | 92004-2142 | STUD | 4 | 4 | 4 |
| 92009 | 92009-2308 | SCREW | 1 | 1 | 1 |
| 92043 | 92043-1037 | PIN | 6 | 6 | 6 |
| | | (FD620-163308 - | | | |
| 92043A | 92043-2227 | PIN | | 1 | 1 |
| 92043B | 92043-2227 | PIN | 1 | | |
| 92049 | 92049-2097 | SEAL-OIL | 1 | 1 | 1 |
| 92049A | 92049-2110 | SEAL-OIL | 2 | 2 | 2 |
| 92141 | 92141-2110 | BEARING-PLANE | 1 | 1 | 1 |
| | | (FD620-163308 - | | | |
| 92143 | 92143-2010 | COLLAR | 8 | 8 | 8 |

This catalog covers:
FD620D- □ S12

GRID NO. This grid covers:
B-04 CYLINDER/CRANKCASE



| Ref. No. | Part No. | Description | Quantity | | |
|----------|------------|--------------|----------|---|---|
| | | | F | G | H |
| 92151 | 92151-2070 | BOLT | 2 | 2 | 2 |
| 92151A | 92151-2123 | BOLT,8X45 | 6 | 6 | 6 |
| 92170 | 92170-2002 | CLAMP | 1 | 1 | 1 |
| 92190 | 92190-2147 | TUBE | 1 | 1 | 1 |
| 130 | 130B0625 | BOLT-FLANGED | 8 | 8 | 8 |
| 130A | 130B0816 | BOLT-FLANGED | 4 | 4 | 4 |
| 130B | 130C0812 | BOLT-FLANGED | 2 | 2 | 2 |
| 130C | 130G0845 | BOLT-FLANGED | 6 | | |
| 130D | 130G0860 | BOLT-FLANGED | 2 | | |
| 130E | 130G0865 | BOLT-FLANGED | 8 | 8 | 8 |
| 130F | 130T0860 | BOLT-FLANGED | | 2 | 2 |
| 410 | 410B0800 | W-PLAIN-S | 2 | 2 | 2 |
| 670 | 670B2010 | O RING | 1 | 1 | 1 |



This catalog covers:

FD620D- □ S12

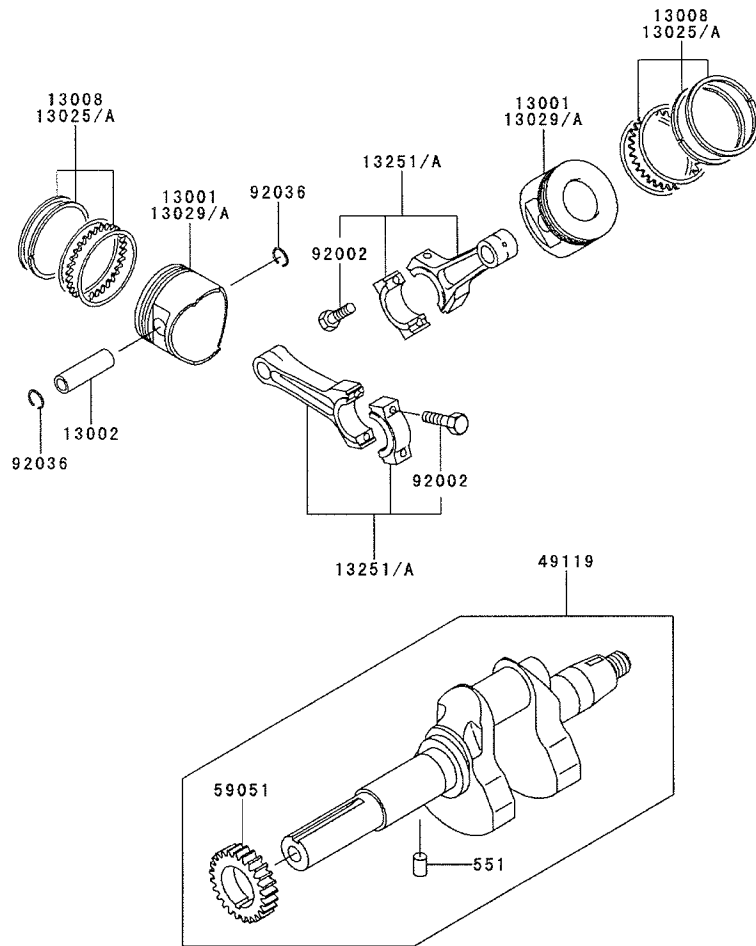
GRID NO.

B-05

This grid covers:

PISTON/CRANKSHAFT

E0120-A090A

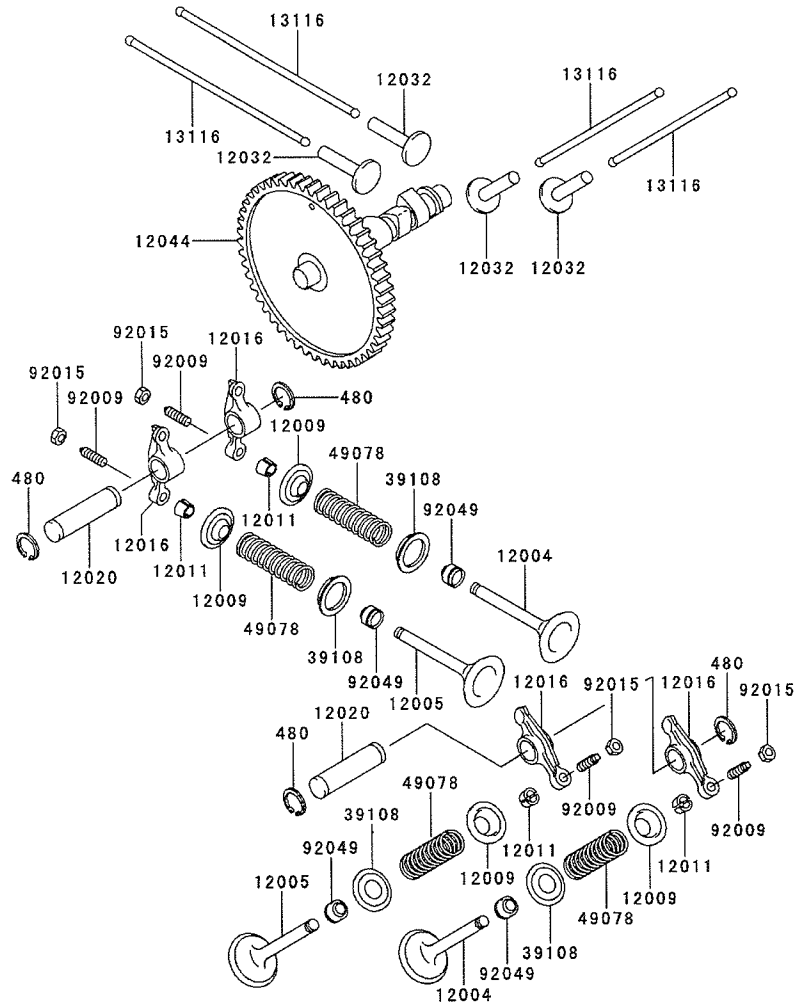


| Ref. No. | Part No. | Description | Quantity | | |
|----------|------------|------------------------------|----------|----|----|
| | | | F | G | H |
| 13001 | 13001-2136 | PISTON-ENGINE | 2 | 2 | 2 |
| 13002 | 13002-1013 | PIN-PISTON | 2 | 2 | 2 |
| 13008 | 13008-6025 | RING-SET-PISTON | 2 | 2 | 2 |
| 13025 | 13025-6007 | RING-SET-PISTON L,0.25 | AR | AR | AR |
| 13025A | 13025-6008 | RING-SET-PISTON L,0.50 | AR | AR | AR |
| 13029 | 13029-2108 | PISTON-ENGINE L,0.25 | AR | AR | AR |
| 13029A | 13029-2109 | PISTON-ENGINE L,0.50 | AR | AR | AR |
| 13251 | 13251-6022 | ROD-ASSY-CONNECTING | 2 | 2 | 2 |
| 13251A | 13251-6026 | ROD-ASSY-CONNECTING,U/S=0.50 | AR | AR | AR |
| 49119 | 49119-2130 | CRANKSHAFT-ASSY | 1 | 1 | 1 |
| 59051 | 59051-2112 | GEAR-SPUR | 1 | 1 | 1 |
| 92002 | 92002-2053 | BOLT | 4 | 4 | 4 |
| 92036 | 92036-021 | RING-SNAP | 4 | 4 | 4 |
| 551 | 551A0408 | PIN-DOWEL | 1 | 1 | 1 |

This catalog covers:
FD620D- □ S12

GRID NO. This grid covers:
B-06 VALVE/CAMSHAFT

E0130-A070A

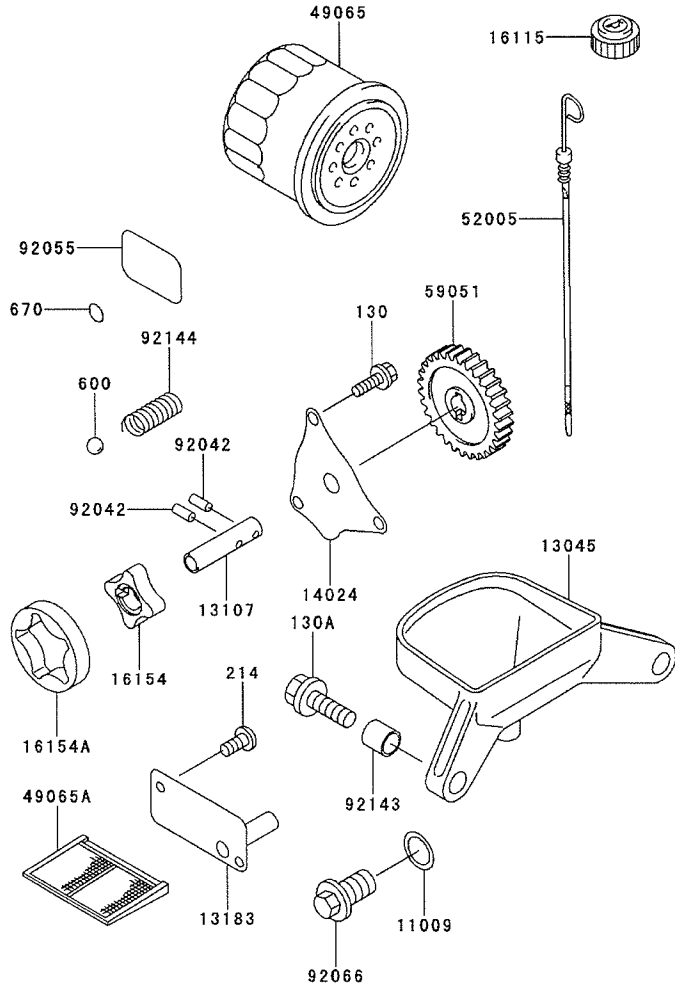


| Ref. No. | Part No. | Description | Quantity | | |
|----------|------------|-----------------------|----------|---|---|
| | | | F | G | H |
| 12004 | 12004-2104 | VALVE-INTAKE | 2 | 2 | 2 |
| 12005 | 12005-2093 | VALVE-EXHAUST | 2 | 2 | 2 |
| 12009 | 12009-2067 | RETAINER-VALVE SPRING | 4 | 4 | 4 |
| 12011 | 12011-2056 | COLLET | 8 | 8 | 8 |
| 12016 | 12016-2056 | ARM-ROCKER | 4 | 4 | 4 |
| 12020 | 12020-2059 | SHAFT-ROCKER | 2 | 2 | 2 |
| 12032 | 12032-2064 | TAPPET | 4 | 4 | 4 |
| 12044 | 12044-2239 | CAMSHAFT-VALVE | 1 | 1 | 1 |
| 13116 | 13116-2057 | ROD-PUSH | 4 | 4 | 4 |
| 39108 | 39108-2057 | RETAINER-SPRING | 4 | 4 | 4 |
| 49078 | 49078-2082 | SPRING-ENGINE VALVE | 4 | 4 | 4 |
| 92009 | 92009-1109 | SCREW | 4 | 4 | 4 |
| 92015 | 92015-1137 | NUT | 4 | 4 | 4 |
| 92049 | 92049-2109 | SEAL-OIL | 4 | 4 | 4 |
| 480 | 480J1200 | CIRCLIP | 4 | 4 | 4 |

This catalog covers:
FD620D- □ S12

GRID NO. This grid covers:
B-07 LUBRICATION-EQUIPMENT

E0140-A015A



| Ref. No. | Part No. | Description | Quantity | | |
|----------|------------|-------------------|----------|---|---|
| | | | F | G | H |
| 11009 | 11009-2566 | GASKET,DRAIN PLUG | 1 | 1 | 1 |
| 13045 | 13045-2051 | RECEIVER-OIL | 1 | 1 | 1 |
| 13107 | 13107-2099 | SHAFT,OIL PUMP | 1 | 1 | 1 |
| 13183 | 13183-2419 | PLATE | 1 | 1 | 1 |
| 14024 | 14024-2113 | COVER,OIL PUMP | 1 | 1 | 1 |
| 16115 | 16115-2090 | CAP-OIL FILLER | 1 | 1 | 1 |
| 16154 | 16154-2053 | ROTOR-PUMP,IN | 1 | 1 | 1 |
| 16154A | 16154-2054 | ROTOR-PUMP,OUT | 1 | 1 | 1 |
| 49065 | 49065-2071 | FILTER-OIL | 1 | 1 | 1 |
| 49065A | 49065-2072 | FILTER-OIL | 1 | 1 | 1 |
| 52005 | 52005-2120 | GAUGE,OIL | 1 | 1 | 1 |
| 59051 | 59051-2114 | GEAR-SPUR | 1 | 1 | 1 |
| 92042 | 92042-014 | PIN | 2 | 2 | 2 |
| 92055 | 92055-2086 | RING-O | 1 | 1 | 1 |
| 92066 | 92066-2099 | PLUG,DRAIN | 1 | 1 | 1 |
| 92143 | 92143-2187 | COLLAR,8.2X10X10 | 2 | 2 | 2 |
| 92144 | 92144-2053 | SPRING | 1 | 1 | 1 |
| 130 | 130B0614 | BOLT-FLANGED | 3 | 3 | 3 |
| 130A | 130B0820 | BOLT-FLANGED | 2 | 2 | 2 |
| 214 | 214B0512 | SCREW-PAN+- | 2 | 2 | 2 |
| 600 | 600A1300 | BALL-STEEL | 1 | 1 | 1 |
| 670 | 670B2011 | O RING | 1 | 1 | 1 |

This catalog covers:

FD620D- □ S12

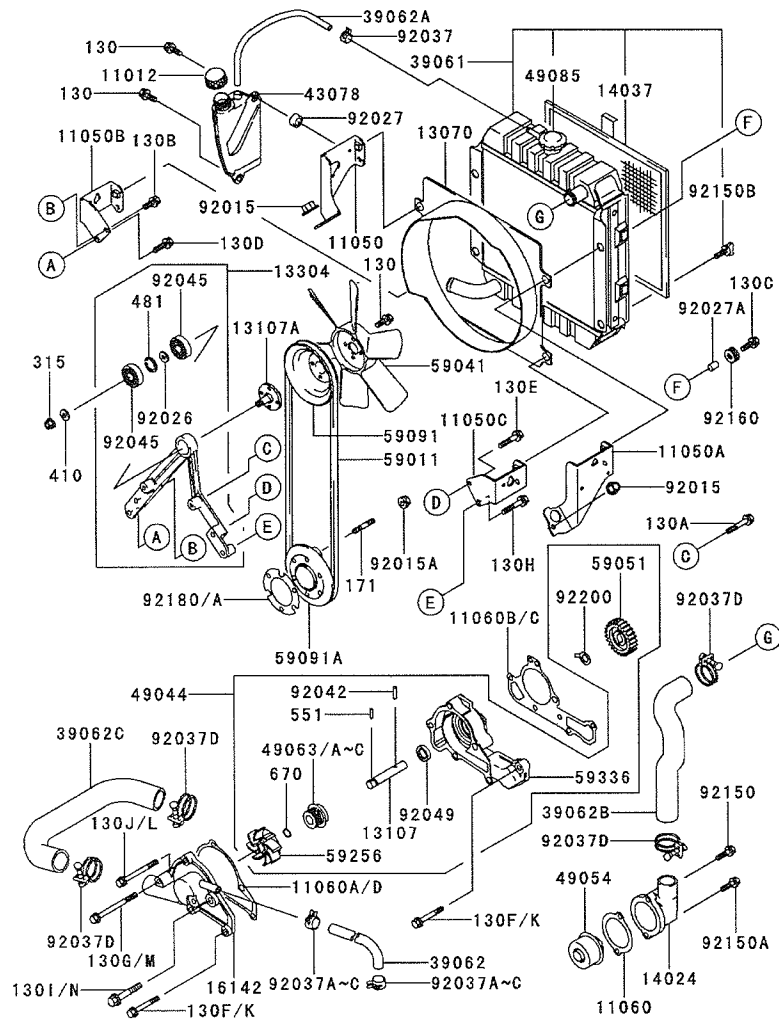
GRID NO.

B-08

This grid covers:

COOLING-EQUIPMENT

E0150-A245D



| Ref. No. | Part No. | Description | Quantity | | |
|----------|---------------|---------------------------|----------|---|---|
| | | | F | G | H |
| 11012 | 11012-1084 | CAP | 1 | 1 | 1 |
| 11050 | 11050-2087-9H | BRACKET | 1 | 1 | 1 |
| 11050A | 11050-2088-9H | BRACKET | 1 | 1 | 1 |
| 11050B | 11050-2089-9H | BRACKET | 1 | 1 | 1 |
| 11050C | 11050-2104 | BRACKET | 1 | 1 | 1 |
| 11060 | 11060-2084 | GASKET,THERMOSTAT COVER | 1 | 1 | 1 |
| 11060A | 11060-2288 | GASKET,PUMP COVER | 1 | | |
| 11060B | 11060-2289 | GASKET,PUMP CASE | 1 | | |
| 11060C | 11060-2450 | GASKET,PUMP CASE | | 1 | 1 |
| 11060D | 11060-2451 | GASKET,PUMP COVER | | 1 | 1 |
| 13070 | 13070-2093 | GUIDE | 1 | 1 | 1 |
| 13107 | 13107-2097 | SHAFT,IMPELLER | 1 | 1 | 1 |
| 13107A | 13107-2246 | SHAFT,PULLEY | 1 | 1 | 1 |
| 13304 | 13304-6007 | HOUSING-ASSY | 1 | 1 | 1 |
| 14024 | 14024-2293 | COVER,THERMOSTAT | 1 | 1 | 1 |
| 14037 | 14037-2128 | SCREEN | 1 | 1 | 1 |
| 16142 | 16142-2069 | COVER-PUMP | 1 | 1 | 1 |
| 39061 | 39061-2056 | RADIATOR-ASSY | 1 | 1 | 1 |
| 39062 | 39062-2051 | HOSE-COOLING,7.5X13.5X305 | 1 | 1 | 1 |
| 39062A | 39062-2054 | HOSE-COOLING,7.5X10.5X460 | 1 | 1 | 1 |
| 39062B | 39062-2062 | HOSE-COOLING | 1 | 1 | 1 |
| 39062C | 39062-2063 | HOSE-COOLING | 1 | 1 | 1 |
| 43078 | 43078-2055 | RESERVOIR | 1 | 1 | 1 |
| 49044 | 49044-2058 | PUMP-WATER | 1 | 1 | 1 |
| 49054 | 49054-2056 | THERMOSTAT | 1 | 1 | 1 |
| 49063 | 49063-1054 | SEAL-MECHANICAL | | | 1 |
| 49063A | 49063-1054 | SEAL-MECHANICAL | | 1 | |
| 49063B | 49063-2056 | SEAL-MECHANICAL | 1 | | |
| 49063C | 49063-2056 | SEAL-MECHANICAL | | * | |
| 49085 | 49085-2052 | CAP-ASSY-PRESSURE | 1 | 1 | 1 |
| 59011 | 59011-2056 | BELT,FAN | 1 | 1 | 1 |
| 59041 | 59041-2063 | FAN,COOLING | 1 | 1 | 1 |
| 59051 | 59051-2113 | GEAR-SPUR | 1 | 1 | 1 |
| 59091 | 59091-2052-9H | PULLEY | 1 | 1 | 1 |
| 59091A | 59091-2053 | PULLEY | 1 | 1 | 1 |
| 59256 | 59256-2057 | IMPELLER | 1 | 1 | 1 |
| 59336 | 59336-2052 | CASE-PUMP | 1 | 1 | 1 |
| 92015 | 92015-1014 | NUT | 2 | 2 | 2 |
| 92015A | 92015-1143 | NUT | 3 | 3 | 3 |
| 92026 | 92026-2311 | SPACER,12X18X1.4 | 1 | 1 | 1 |

This catalog covers:

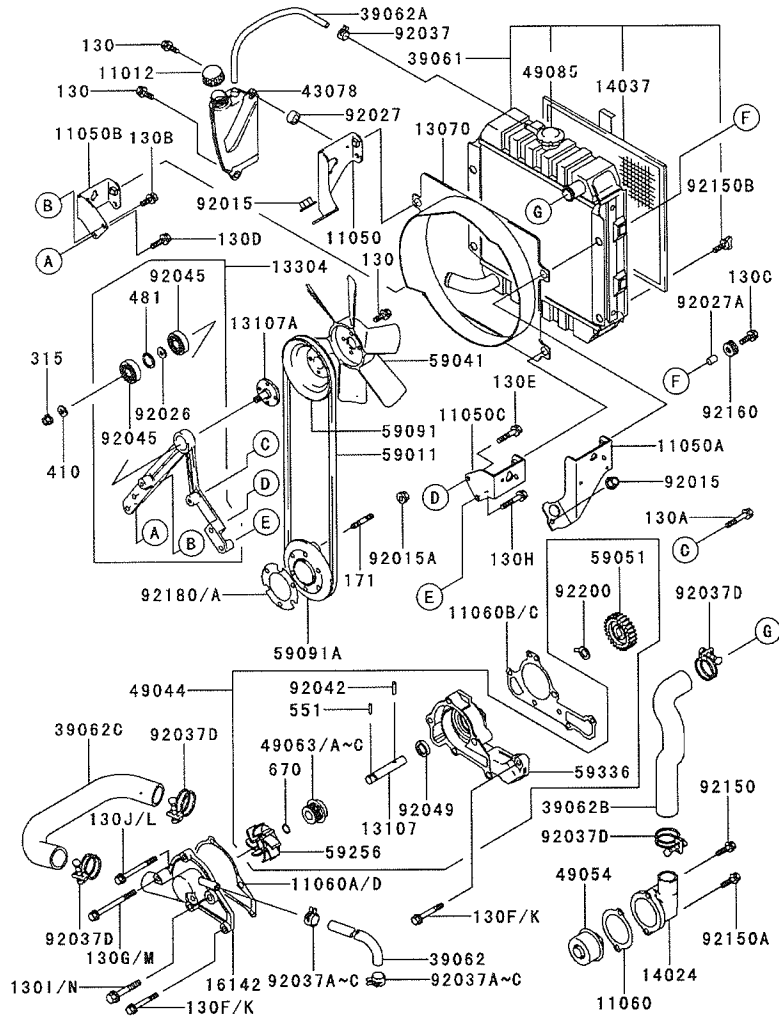
FD620D- □ S12

GRID NO. This grid covers:

B-09

COOLING-EQUIPMENT

E0150-A245D

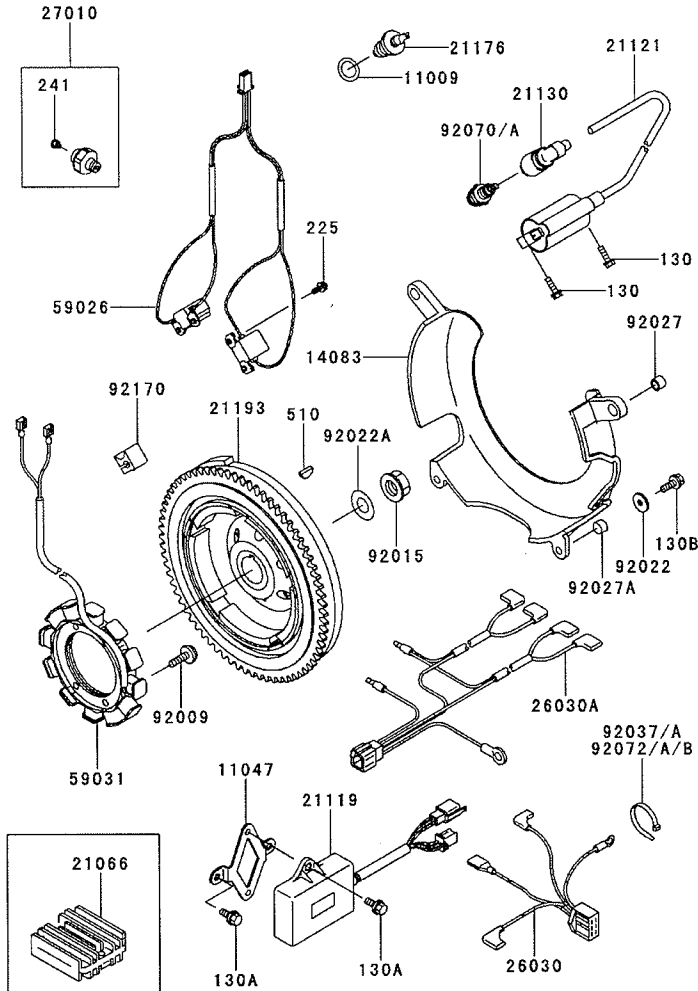


| Ref. No. | Part No. | Description | Quantity | | |
|----------|------------|------------------------|----------|----|----|
| | | | F | G | H |
| 92027 | 92027-1565 | COLLAR | 1 | 1 | 1 |
| 92027A | 92027-271 | COLLAR | 4 | 4 | 4 |
| 92037 | 92037-2001 | CLAMP | 1 | 1 | 1 |
| 92037A | 92037-2065 | CLAMP | * | | |
| 92037B | 92037-2082 | CLAMP | | 2 | 2 |
| 92037C | 92037-2082 | CLAMP | 2 | | |
| 92037D | 92037-2210 | CLAMP | 4 | 4 | 4 |
| 92042 | 92042-014 | PIN | 1 | 1 | 1 |
| 92045 | 92045-2191 | BEARING-BALL,6001DDUC3 | 2 | 2 | 2 |
| 92049 | 92049-2111 | SEAL-OIL | 1 | 1 | 1 |
| 92150 | 92150-2230 | BOLT,6X40 | 1 | 1 | 1 |
| 92150A | 92150-2231 | BOLT,6X20 | 1 | 1 | 1 |
| 92150B | 92150-2255 | BOLT | 1 | 1 | 1 |
| 92160 | 92160-2034 | DAMPER | 4 | 4 | 4 |
| 92180 | 92180-2013 | SHIM,T=0.6 | AR | AR | AR |
| 92180A | 92180-2014 | SHIM,T=1.2 | AR | AR | AR |
| 92200 | 92200-2044 | WASHER | 1 | 1 | 1 |
| 130 | 130B0616 | BOLT-FLANGED | 6 | 6 | 6 |
| 130A | 130B0635 | BOLT-FLANGED | 2 | 2 | 2 |
| 130B | 130B0820 | BOLT-FLANGED | 1 | 1 | 1 |
| 130C | 130B0825 | BOLT-FLANGED | 4 | 4 | 4 |
| 130D | 130B0830 | BOLT-FLANGED | 1 | 1 | 1 |
| 130E | 130B0840 | BOLT-FLANGED | 1 | 1 | 1 |
| 130F | 130G0645 | BOLT-FLANGED | 3 | | |
| 130G | 130G0675 | BOLT-FLANGED | 1 | | |
| 130H | 130G0845 | BOLT-FLANGED | 1 | 1 | 1 |
| 130I | 130G0870 | BOLT-FLANGED | 1 | | |
| 130J | 130H0665 | BOLT-FLANGED | 1 | | |
| 130K | 130T0645 | BOLT-FLANGED | | 3 | 3 |
| 130L | 130T0665 | BOLT-FLANGED | | 1 | 1 |
| 130M | 130T0675 | BOLT-FLANGED | | 1 | 1 |
| 130N | 130T0870 | BOLT-FLANGED | | 1 | 1 |
| 171 | 171G0818 | BOLT-STUD | 3 | 3 | 3 |
| 315 | 315B1000 | NUT-HEX-FINE | 1 | 1 | 1 |
| 410 | 410B1000 | W-PLAIN-S | 1 | 1 | 1 |
| 481 | 481J2800 | CIRCLIP | 1 | 1 | 1 |
| 551 | 551A0314 | PIN-DOWEL | 1 | 1 | 1 |
| 670 | 670B1507 | O RING | 1 | 1 | 1 |

This catalog covers:
FD620D- □ S12

GRID NO. This grid covers:
B-10 ELECTRIC-EQUIPMENT

E0160-A734A

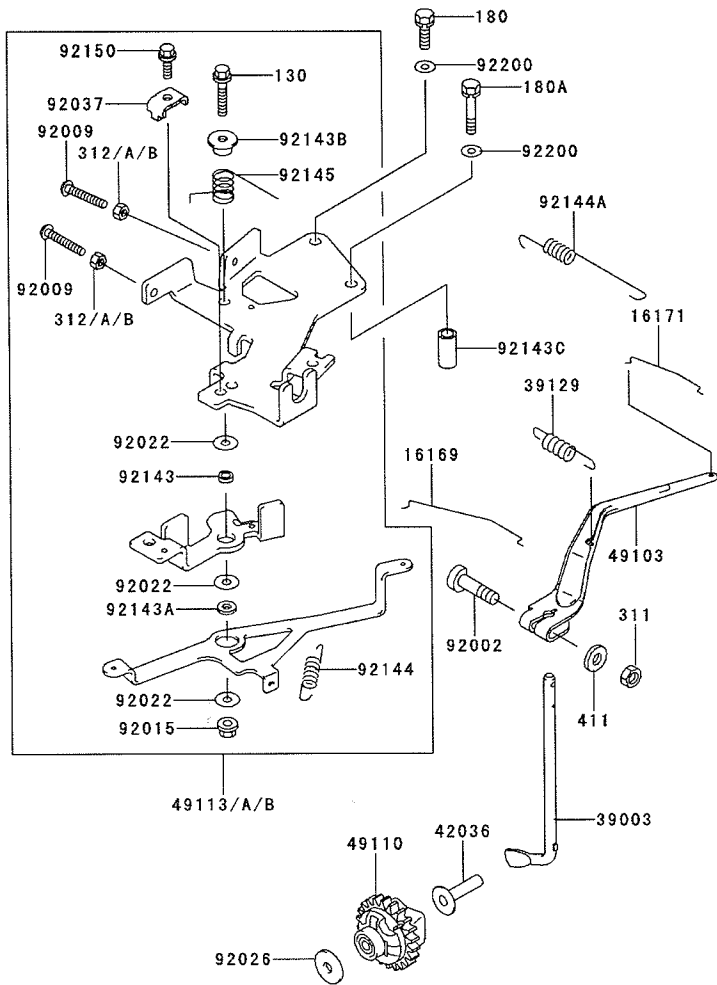


| Ref. No. | Part No. | Description | Quantity | | |
|----------|---------------|------------------------------|----------|---|---|
| | | | F | G | H |
| 11009 | 11009-2766 | GASKET | 1 | 1 | 1 |
| 11047 | 11047-2036-9H | BRACKET | 1 | 1 | 1 |
| 14083 | 14083-2051 | COVER-FLYWHEEL | 1 | 1 | 1 |
| 21066 | 21066-2070 | REGULATOR-VOLTAGE | 1 | 1 | 1 |
| 21119 | 21119-2157 | IGNITER | 1 | 1 | 1 |
| 21121 | 21121-2083 | COIL-IGNITION | 2 | 2 | 2 |
| 21130 | 21130-2060 | CAP-SPARK PLUG | 2 | 2 | 2 |
| 21176 | 21176-2098 | SENSOR | 1 | 1 | 1 |
| 21193 | 21193-2149 | FLYWHEEL-ASSY | 1 | 1 | 1 |
| 26030 | 26030-2073 | HARNESS | 1 | 1 | 1 |
| 26030A | 26030-2167 | HARNESS | 1 | 1 | 1 |
| 27010 | 27010-2170 | SWITCH | 1 | 1 | 1 |
| 59026 | 59026-2054 | COIL-PULSING | 1 | 1 | 1 |
| 59031 | 59031-2096 | COIL-CHARGING | 1 | 1 | 1 |
| 92009 | 92009-2273 | SCREW | 4 | 4 | 4 |
| 92015 | 92015-2167 | NUT | 1 | 1 | 1 |
| 92022 | 92022-1517 | WASHER | 2 | 2 | 2 |
| 92022A | 92022-2245 | WASHER | 1 | 1 | 1 |
| 92027 | 92027-1568 | COLLAR,8.3X11.5X9 | 2 | 2 | 2 |
| 92027A | 92027-2096 | COLLAR,6.2X7.8X5 | 2 | 2 | 2 |
| 92037 | 92037-1173 | CLAMP | | | 2 |
| 92037A | 92037-1173 | CLAMP | | 2 | |
| 92070 | 92070-2072 | PLUG-SPARK,BMR4A(NGK),SOLID | 2 | 2 | |
| 92070A | 92070-2112 | PLUG-SPARK,BPR4ES(NGK),SOLID | | | 2 |
| 92072 | 92072-1195 | BAND | 2 | 2 | 2 |
| 92072A | 92072-2003 | BAND | 2 | | |
| 92072B | 92072-2003 | BAND | | * | |
| 92170 | 92170-2056 | CLAMP | 1 | 1 | 1 |
| 130 | 130B0520 | BOLT-FLANGED | 4 | 4 | 4 |
| 130A | 130B0614 | BOLT-FLANGED | 4 | 4 | 4 |
| 130B | 130B0616 | BOLT-FLANGED | 2 | 2 | 2 |
| 225 | 225B0414 | SCREW-PAN-WSP-CROS | 4 | 4 | 4 |
| 241 | 241B0406 | SCREW-PAN-WP+- | 1 | 1 | 1 |
| 510 | 510A5100 | KEY-WOODRUFF | 1 | 1 | 1 |

This catalog covers:
FD620D- □ S12

GRID NO. This grid covers:
B-11 CONTROL-EQUIPMENT

E0170-A208E



| Ref. No. | Part No. | Description | Quantity | | |
|----------|------------|--------------------|----------|---|---|
| | | | F | G | H |
| 16169 | 16169-2092 | LINK-CHOKE | 1 | 1 | 1 |
| 16171 | 16171-2065 | LINK | 1 | 1 | 1 |
| 39003 | 39003-2083 | ARM-PIVOT | 1 | 1 | 1 |
| 39129 | 39129-2070 | SPRING-GOVERNOR | 1 | 1 | 1 |
| 42036 | 42036-2060 | SLEEVE | 1 | 1 | 1 |
| 49103 | 49103-2141 | ARM-GOVERNOR | 1 | 1 | 1 |
| 49110 | 49110-2083 | GOVERNOR-ASSY | 1 | 1 | 1 |
| 49113 | 49113-2160 | PANEL-COMP-CONTROL | * | | |
| 49113A | 49113-2165 | PANEL-COMP-CONTROL | | 1 | 1 |
| 49113B | 49113-2165 | PANEL-COMP-CONTROL | 1 | | |
| | | (FD620-163244) | | | |
| | | (FD620-163245 -) | | | |
| 92002 | 92002-2269 | BOLT | 1 | 1 | 1 |
| 92009 | 92009-2381 | SCREW,5X30 | 2 | 2 | 2 |
| 92015 | 92015-1339 | NUT | 1 | 1 | 1 |
| 92022 | 92022-2372 | WASHER,6X19X1.2 | 3 | 3 | 3 |
| 92026 | 92200-2036 | SPACER | 1 | 1 | 1 |
| 92037 | 92037-2209 | CLAMP | 2 | 2 | 2 |
| 92143 | 92143-1596 | COLLAR,6.2X10X3.4 | 1 | 1 | 1 |
| 92143A | 92143-2135 | COLLAR,6X13X2.3 | 1 | 1 | 1 |
| 92143B | 92143-2148 | COLLAR | 1 | 1 | 1 |
| 92143C | 92143-2200 | COLLAR,6.8X10X20.5 | 1 | 1 | 1 |
| 92144 | 92144-2052 | SPRING | 1 | 1 | 1 |
| 92144A | 92144-2287 | SPRING | 1 | 1 | 1 |
| 92145 | 92145-2058 | SPRING | 1 | 1 | 1 |
| 92150 | 92150-2182 | BOLT,5X18 | 2 | 2 | 2 |
| 92200 | 92200-2070 | WASHER | 2 | 2 | 2 |
| 130 | 130B0635 | BOLT-FLANGED | 1 | 1 | 1 |
| 180 | 180B0616 | BOLT-UPSET-WS | 1 | 1 | 1 |
| 180A | 180B0635 | BOLT-UPSET-WS | 1 | 1 | 1 |
| 311 | 311B0600 | NUT-HEX | 1 | 1 | 1 |
| 312 | 312B0500 | NUT-HEX | 2 | 2 | 2 |
| 312A | 312B0500 | NUT-HEX | 2 | | |
| 312B | 312G0500 | NUT-HEX | * | | |
| 411 | 411B0600 | WASHER-PLAIN | 1 | 1 | 1 |

This catalog covers:

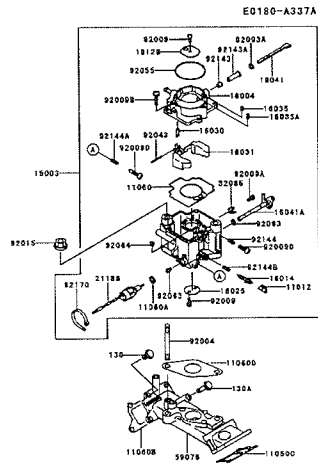
FD620D- □ S12

GRID NO.

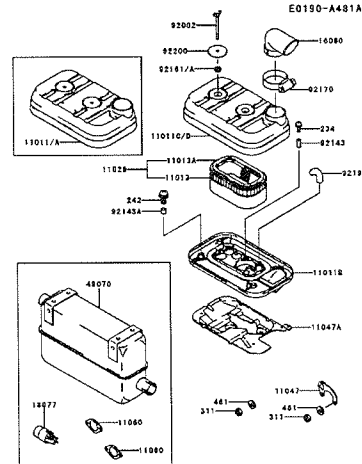
C-01

This grid covers:

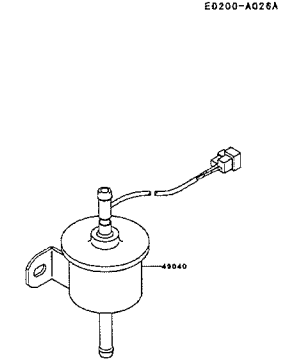
PICTORIAL INDEX



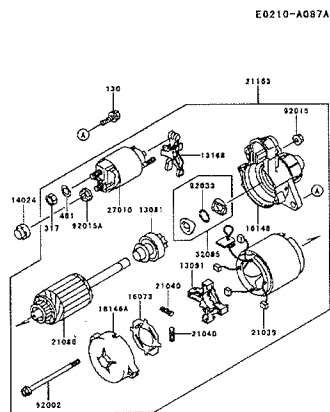
C-03 CARBURETOR



C-04 AIR-FILTER/MUFFLER



C-05 FUEL-TANK/FUEL-VALVE

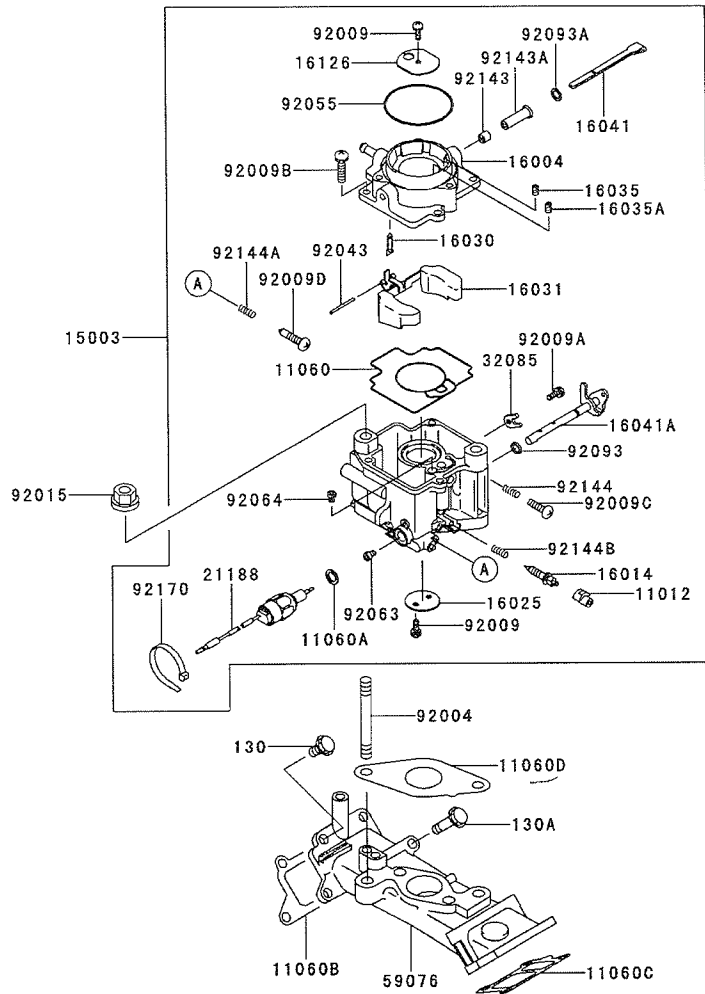


C-06 STARTER

This catalog covers:
FD620D- □ S12

GRID NO. This grid covers:
C-03 CARBURETOR

E0180-A337A



| Ref. No. | Part No. | Description | Quantity | | |
|----------|------------|------------------------|----------|---|---|
| | | | F | G | H |
| 11012 | 11012-2381 | CAP | 1 | 1 | 1 |
| 11060 | 11060-2072 | GASKET | 1 | 1 | 1 |
| 11060A | 11060-2073 | GASKET | 1 | 1 | 1 |
| 11060B | 11060-2087 | GASKET,INTAKE MANIFOLD | 1 | 1 | 1 |
| 11060C | 11060-2088 | GASKET,INTAKE MANIFOLD | 1 | 1 | 1 |
| 11060D | 11060-2090 | GASKET,CARBURETOR | 1 | 1 | 1 |
| 15003 | 15003-2528 | CARBURETOR-ASSY | 1 | 1 | 1 |
| 16004 | 16004-2051 | CAP-CHAMBER | 1 | 1 | 1 |
| 16014 | 16014-2077 | SCREW-PILOT AIR | 1 | 1 | 1 |
| 16025 | 16025-2163 | VALVE-THROTTLE | 1 | 1 | 1 |
| 16030 | 16030-2089 | VALVE-FLOAT | 1 | 1 | 1 |
| 16031 | 16031-2071 | FLOAT | 1 | 1 | 1 |
| 16035 | 16035-2073 | JET-AIR,#1.8 | 1 | 1 | 1 |
| 16035A | 16035-2074 | JET-AIR,#0.9 | 1 | 1 | 1 |
| 16041 | 16041-2218 | SHAFT-CARBURETOR,CHOKE | 1 | 1 | 1 |
| 16041A | 16041-2243 | SHAFT-CARBURETOR | 1 | 1 | 1 |
| 16126 | 16126-2185 | VALVE,CHOKE | 1 | 1 | 1 |
| 21188 | 21188-2006 | SOLENOID | 1 | 1 | 1 |
| 32085 | 32085-2089 | STOPPER | 1 | 1 | 1 |
| 59076 | 59076-2061 | MANIFOLD-INTAKE | 1 | 1 | 1 |
| 92004 | 92004-2143 | STUD | 2 | 2 | 2 |
| 92009 | 92009-2330 | SCREW,3X5.5 | 3 | 3 | 3 |
| 92009A | 92009-2331 | SCREW | 1 | 1 | 1 |
| 92009B | 92009-2332 | SCREW | 4 | 4 | 4 |
| 92009C | 92009-2333 | SCREW | 1 | 1 | 1 |
| 92009D | 92009-2334 | SCREW | 1 | 1 | 1 |
| 92015 | 92015-1143 | NUT | 2 | 2 | 2 |
| 92043 | 92043-2196 | PIN | 1 | 1 | 1 |
| 92055 | 92055-2175 | RING-O,49.4MM | 1 | 1 | 1 |
| 92063 | 92063-2241 | JET-MAIN,#112 | 1 | 1 | 1 |
| 92064 | 92064-2093 | JET-PILOT,#58 | 1 | 1 | 1 |
| 92093 | 92093-2092 | SEAL | 1 | 1 | 1 |
| 92093A | 92093-2093 | SEAL | 1 | 1 | 1 |
| 92143 | 92143-2191 | COLLAR | 1 | 1 | 1 |
| 92143A | 92143-2192 | COLLAR | 1 | 1 | 1 |
| 92144 | 92144-2306 | SPRING | 1 | 1 | 1 |
| 92144A | 92144-2307 | SPRING | 1 | 1 | 1 |
| 92144B | 92144-2397 | SPRING | 1 | 1 | 1 |
| 92170 | 92170-2098 | CLAMP | 1 | 1 | 1 |
| 130 | 130B0620 | BOLT-FLANGED | 5 | 5 | 5 |
| 130A | 130B0645 | BOLT-FLANGED | 3 | 3 | 3 |

This catalog covers:

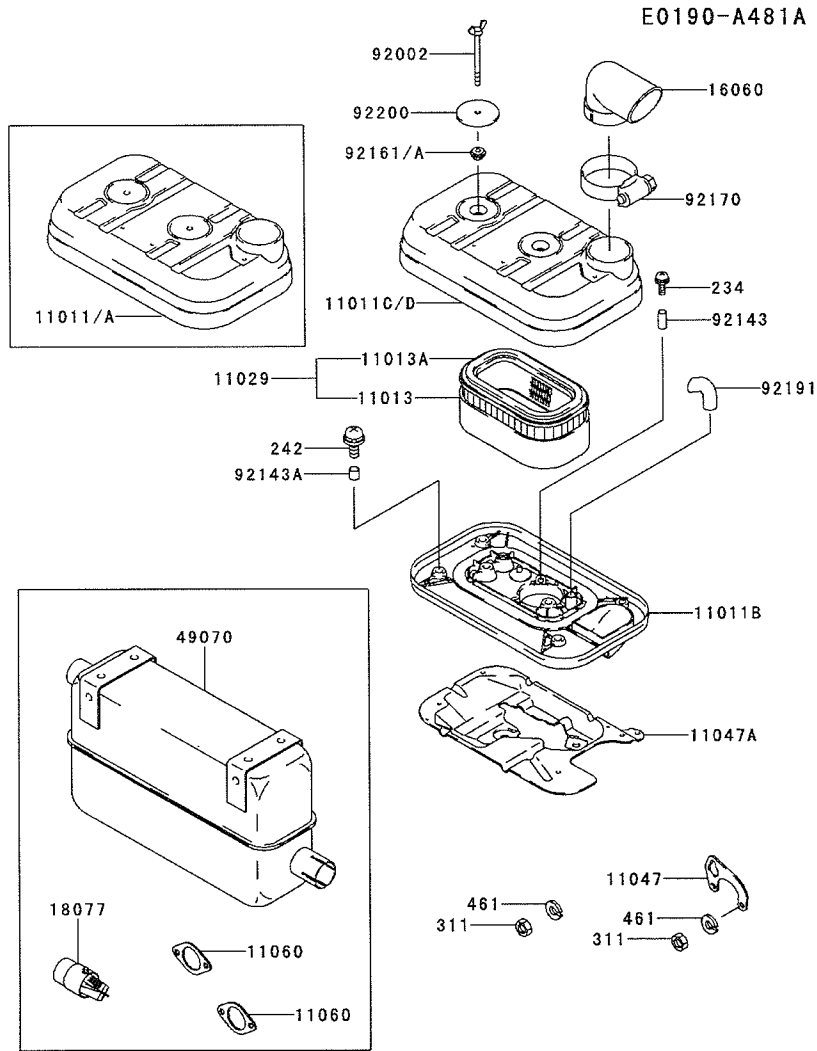
FD620D- □ S12

GRID NO.

C-04

This grid covers:

AIR-FILTER/MUFFLER



| Ref. No. | Part No. | Description | Quantity | | |
|----------|----------------|-------------------------|----------|---|---|
| | | | F | G | H |
| 11011 | 11011-2239 | CASE-AIR FILTER | 1 | * | |
| 11011A | 11011-2239 | CASE-AIR FILTER | | | |
| 11011B | 11011-2259 | CASE-AIR FILTER | 1 | 1 | 1 |
| 11011C | 11011-2323 | CASE-AIR FILTER | | | 1 |
| 11011D | 11011-2323 | CASE-AIR FILTER | | 1 | |
| 11013 | 11013-2114 | ELEMENT-AIR FILTER | 1 | 1 | 1 |
| 11013A | 11013-2139 | ELEMENT-AIR FILTER | 1 | 1 | 1 |
| 11029 | 11029-2005 | ELEMENT-ASSY-AIR FILTER | 1 | 1 | 1 |
| 11047 | 11047-2057-9H | BRACKET | 1 | 1 | 1 |
| 11047A | 11047-2111-9H | BRACKET | 1 | 1 | 1 |
| 11060 | 11060-2079 | GASKET,MUFFLRT | 2 | 2 | 2 |
| 16060 | 16060-2185 | PIPE-INTAKE | 1 | 1 | 1 |
| 18077 | (LOCAL ITEM) | ARRESTER-SPARK | 1 | 1 | 1 |
| 49070 | 49070-2639-9Y | MUFFLER-COMP | 1 | 1 | 1 |
| 92002 | 92002-2230 | BOLT | 2 | 2 | 2 |
| 92143 | 92143-2178 | COLLAR,5.1X6.3X14 | 3 | 3 | 3 |
| 92143A | 92143-2189 | COLLAR,6.2X7.8X7.5 | 4 | 4 | 4 |
| 92161 | 92161-2058 | DAMPER | | | 2 |
| 92161A | 92161-2058 | DAMPER | | 2 | |
| 92170 | 92170-2075 | CLAMP | 1 | 1 | 1 |
| 92191 | 92191-2010 | TUBE | 1 | 1 | 1 |
| 92200 | 92200-2059-9H | WASHER | 2 | 2 | 2 |
| 234 | 234B0525 | SCREW-PAN-WSP+- | 3 | 3 | 3 |
| 242 | 242B0516 | SCREW-PAN-WSP+- | 4 | 4 | 4 |
| 311 | 311G0600 | NUT-HEX | 4 | 4 | 4 |
| 461 | 461F0600 | WASHER-SPRING | 4 | 4 | 4 |

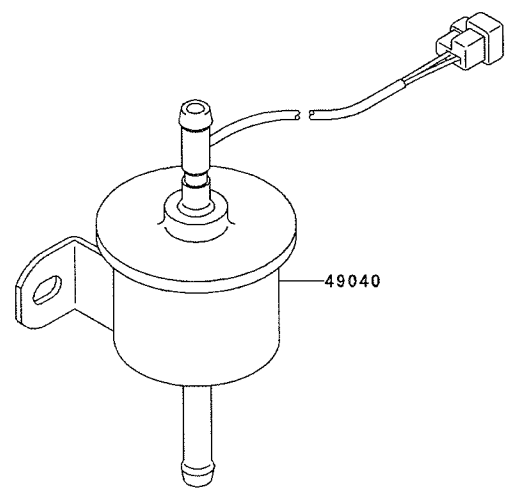
This catalog covers:
FD620D- □ S12

GRID NO.
C-05

This grid covers:
FUEL-TANK/FUEL-VALVE

E0200-A026A

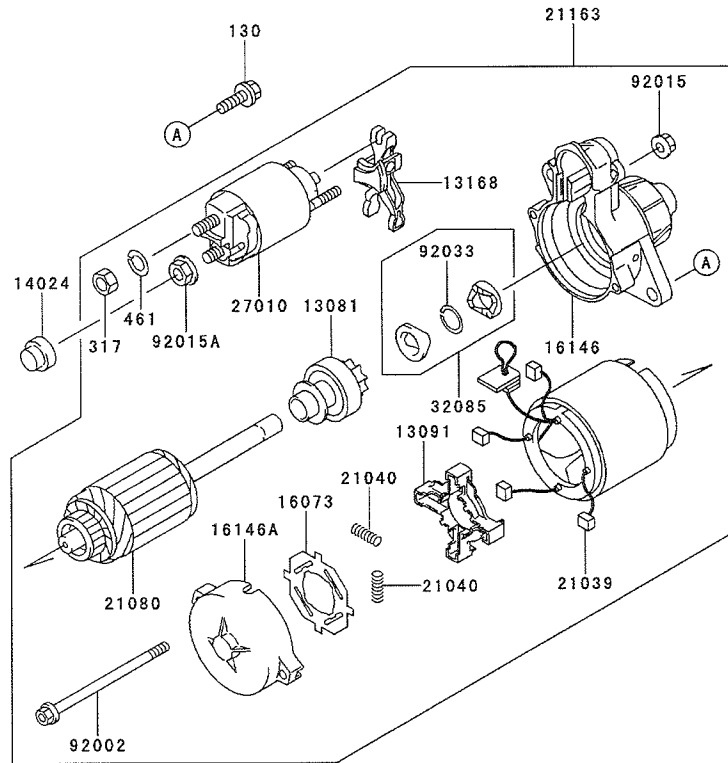
| Ref. No. | Part No. | Description | Quantity | | |
|----------|------------|-------------|----------|---|---|
| | | | F | G | H |
| 49040 | 49040-2065 | PUMP-FUEL | 1 | 1 | 1 |



This catalog covers:
FD620D- □ S12

GRID NO. This grid covers:
C-06 STARTER

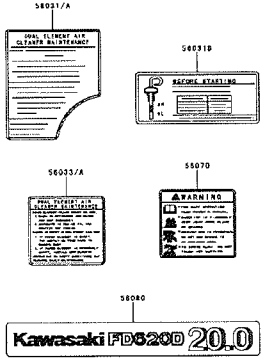
E0210-A087A



| Ref. No. | Part No. | Description | Quantity | | |
|----------|------------|------------------|----------|---|---|
| | | | F | G | H |
| 13081 | 13081-2108 | CLUTCH-ASSY | 1 | 1 | 1 |
| 13091 | 13091-2068 | HOLDER,BRUSH | 1 | 1 | 1 |
| 13168 | 13168-2131 | LEVER,SHIFT | 1 | 1 | 1 |
| 14024 | 14024-2205 | COVER | 1 | 1 | 1 |
| 16073 | 16073-2098 | INSULATOR | 1 | 1 | 1 |
| 16146 | 16146-2186 | COVER-ASSY | 1 | 1 | 1 |
| 16146A | 16146-2187 | COVER-ASSY | 1 | 1 | 1 |
| 21039 | 21039-2059 | BRUSH | 4 | 4 | 4 |
| 21040 | 21040-2052 | SPRING-BRUSH | 4 | 4 | 4 |
| 21080 | 21080-2054 | ARMATURE | 1 | 1 | 1 |
| 21163 | 21163-2101 | STARTER-ELECTRIC | 1 | 1 | 1 |
| 27010 | 27010-2122 | SWITCH | 1 | 1 | 1 |
| 32085 | 32085-2097 | STOPPER | 1 | 1 | 1 |
| 92002 | 92002-2277 | BOLT | 2 | 2 | 2 |
| 92015 | 92015-2146 | NUT | 2 | 2 | 2 |
| 92015A | 92015-2147 | NUT | 1 | 1 | 1 |
| 92033 | 92033-2081 | RING-SNAP | 1 | 1 | 1 |
| 130 | 130B0830 | BOLT-FLANGED | 2 | 2 | 2 |
| 317 | 317B0800 | NUT-HEX-SMALL | 2 | 2 | 2 |
| 461 | 461F0800 | WASHER-SPRING | 2 | 2 | 2 |

This catalog covers:
FD620D- □ S12

GRID NO. This grid covers:
D-01 PICTORIAL INDEX

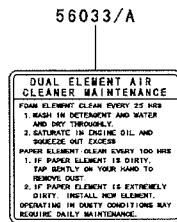
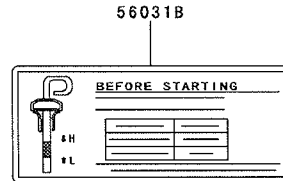
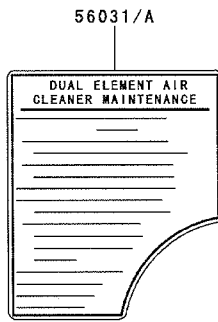
| | | |
|---|--|--|
| <p style="text-align: center;">FD290-A839A</p>  <p>D-03 LABEL</p> | | |
| | | |

This catalog covers:
FD620D- □ S12

GRID NO. This grid covers:
D-03 LABEL

F0290-A839A

| Ref. No. | Part No. | Description | Quantity | | |
|----------|------------|----------------|----------|---|---|
| | | | F | G | H |
| 56031 | 56031-2444 | LABEL-MANUAL | 1 | | |
| 56031A | 56031-2444 | LABEL-MANUAL | | * | |
| | (| - | | | |
| | | FD620-247919) | | | |
| 56031B | 56031-2481 | LABEL-MANUAL | 1 | 1 | 1 |
| 56033 | 56033-2081 | LABEL-MANUAL | | | 1 |
| 56033A | 56033-2081 | LABEL-MANUAL | | 1 | |
| | (| FD620-247920 - | | | |
| |) | | | | |
| 56070 | 56070-2066 | LABEL-WARNING | 1 | 1 | 1 |
| 56080 | 56080-2080 | LABEL-BRAND | 1 | 1 | 1 |



This catalog covers:

FD620D- □ S12

GRID NO.

D-04

This grid covers:

PART NAME INDEX

| | |
|----------------------------|------|
| AIR-FILTER/MUFFLER..... | C-04 |
| CARBURETOR..... | C-03 |
| CONTROL-EQUIPMENT | B-11 |
| COOLING-EQUIPMENT..... | B-08 |
| COOLING-EQUIPMENT | B-09 |
| CYLINDER/CRANKCASE..... | B-03 |
| CYLINDER/CRANKCASE..... | B-04 |
| ELECTRIC-EQUIPMENT..... | B-10 |
| FUEL-TANK/FUEL-VALVE | C-05 |
| LABEL..... | D-03 |
| LUBRICATION-EQUIPMENT..... | B-07 |
| PISTON/CRANKSHAFT..... | B-05 |
| STARTER..... | C-06 |
| VALVE/CAMSHAFT..... | B-06 |

This catalog covers:

FD620D- □ S12

GRID NO. This grid covers:

D-05

NUMERICAL PARTS INDEX

| Part No. | Grid No. | Part No. | Grid No. | Part No. | Grid No. | Part No. | Grid No. | Part No. | Grid No. |
|---------------|----------|------------|----------|---------------|----------|---------------|----------|------------|----------|
| 11004-2107 | B-03 | 13029-2109 | B-05 | 16035-2073 | C-03 | 42036-2060 | B-11 | 92004-2142 | B-03 |
| 11008-2087 | B-03 | 13045-2051 | B-07 | 16035-2074 | C-03 | 43078-2055 | B-08 | 92004-2143 | C-03 |
| 11008-2135 | B-03 | 13070-2093 | B-08 | 16041-2218 | C-03 | 461F0600 | C-04 | 92009-1109 | B-06 |
| 11008-2135 | B-03 | 13081-2108 | C-06 | 16041-2243 | C-03 | 461F0800 | C-06 | 92009-2273 | B-10 |
| 11008-2139 | B-03 | 13091-2068 | C-06 | 16060-2185 | C-04 | 480J1200 | B-06 | 92009-2308 | B-03 |
| 11008-6015 | B-03 | 130B0520 | B-10 | 16073-2098 | C-06 | 481J2800 | B-09 | 92009-2330 | C-03 |
| 11008-6033 | B-03 | 130B0614 | B-07 | 16115-2090 | B-07 | 49015-6130 | B-03 | 92009-2331 | C-03 |
| 11008-6036 | B-03 | 130B0614 | B-10 | 16126-2146 | B-03 | 49040-2065 | C-05 | 92009-2332 | C-03 |
| 11008-6036 | B-03 | 130B0616 | B-09 | 16126-2185 | C-03 | 49044-2058 | B-08 | 92009-2333 | C-03 |
| 11009-2566 | B-07 | 130B0616 | B-10 | 16142-2069 | B-08 | 49054-2056 | B-08 | 92009-2334 | C-03 |
| 11009-2766 | B-10 | 130B0620 | C-03 | 16146-2186 | C-06 | 49063-1054 | B-08 | 92009-2381 | B-11 |
| 11009-3028 | B-03 | 130B0625 | B-04 | 16146-2187 | C-06 | 49063-1054 | B-08 | 92015-1014 | B-08 |
| 11011-2239 | C-04 | 130B0635 | B-09 | 16154-2053 | B-07 | 49063-2056 | B-08 | 92015-1137 | B-06 |
| 11011-2239 | C-04 | 130B0635 | B-11 | 16154-2054 | B-07 | 49063-2056 | B-08 | 92015-1143 | B-08 |
| 11011-2259 | C-04 | 130B0645 | C-03 | 16169-2092 | B-11 | 49065-2071 | B-07 | 92015-1143 | C-03 |
| 11011-2323 | C-04 | 130B0816 | B-04 | 16171-2065 | B-11 | 49065-2072 | B-07 | 92015-1339 | B-11 |
| 11011-2323 | C-04 | 130B0820 | B-07 | 171G0818 | B-09 | 49070-2639-9Y | C-04 | 92015-2146 | C-06 |
| 11012-1084 | B-08 | 130B0820 | B-09 | 180B0616 | B-11 | 49078-2082 | B-06 | 92015-2147 | C-06 |
| 11012-2381 | C-03 | 130B0825 | B-09 | 180B0635 | B-11 | 49085-2052 | B-08 | 92015-2167 | B-10 |
| 11013-2114 | C-04 | 130B0830 | B-09 | 21039-2059 | C-06 | 49103-2141 | B-11 | 92022-1517 | B-10 |
| 11013-2139 | C-04 | 130B0830 | C-06 | 21040-2052 | C-06 | 49110-2083 | B-11 | 92022-2245 | B-10 |
| 11022-2056 | B-03 | 130B0840 | B-09 | 21066-2070 | B-10 | 49113-2160 | B-11 | 92022-2372 | B-11 |
| 11022-2063 | B-03 | 130C0812 | B-04 | 21080-2054 | C-06 | 49113-2165 | B-11 | 92026-2311 | B-08 |
| 11029-2005 | C-04 | 130G0645 | B-09 | 21119-2157 | B-10 | 49113-2165 | B-11 | 92027-1565 | B-09 |
| 11047-2036-9H | B-10 | 130G0675 | B-09 | 21121-2083 | B-10 | 49119-2130 | B-05 | 92027-1568 | B-10 |
| 11047-2057-9H | C-04 | 130G0845 | B-04 | 21130-2060 | B-10 | 49120-2287 | B-03 | 92027-2096 | B-10 |
| 11047-2111-9H | C-04 | 130G0845 | B-09 | 21163-2101 | C-06 | 49120-2287 | B-03 | 92027-271 | B-09 |
| 11050-2087-9H | B-08 | 130G0860 | B-04 | 21176-2098 | B-10 | 49120-6075 | B-03 | 92033-2081 | C-06 |
| 11050-2088-9H | B-08 | 130G0865 | B-04 | 21188-2006 | C-03 | 510A5100 | B-10 | 92036-021 | B-05 |
| 11050-2089-9H | B-08 | 130G0870 | B-09 | 21193-2149 | B-10 | 52005-2120 | B-07 | 92037-1173 | B-10 |
| 11050-2104 | B-08 | 130H0665 | B-09 | 214B0512 | B-07 | 551A0314 | B-09 | 92037-1173 | B-10 |
| 11060-2072 | C-03 | 130T0645 | B-09 | 225B0414 | B-10 | 551A0408 | B-05 | 92037-2001 | B-09 |
| 11060-2073 | C-03 | 130T0665 | B-09 | 234B0525 | C-04 | 56031-2444 | D-03 | 92037-2065 | B-09 |
| 11060-2079 | C-04 | 130T0675 | B-09 | 241B0406 | B-10 | 56031-2444 | D-03 | 92037-2082 | B-09 |
| 11060-2084 | B-08 | 130T0860 | B-04 | 242B0516 | C-04 | 56031-2481 | D-03 | 92037-2082 | B-09 |
| 11060-2087 | C-03 | 130T0870 | B-09 | 26030-2073 | B-10 | 56033-2081 | D-03 | 92037-2209 | B-11 |
| 11060-2088 | C-03 | 13107-2097 | B-08 | 26030-2167 | B-10 | 56033-2081 | D-03 | 92037-2210 | B-09 |
| 11060-2089 | B-03 | 13107-2099 | B-07 | 27010-2122 | C-06 | 56070-2066 | D-03 | 92042-014 | B-07 |
| 11060-2090 | C-03 | 13107-2246 | B-08 | 27010-2170 | B-10 | 56080-2080 | D-03 | 92042-014 | B-09 |
| 11060-2284 | B-03 | 13116-2057 | B-06 | 311B0600 | B-11 | 59011-2056 | B-08 | 92043-1037 | B-03 |
| 11060-2288 | B-08 | 13168-2131 | C-06 | 311G0600 | C-04 | 59026-2054 | B-10 | 92043-2196 | C-03 |
| 11060-2289 | B-08 | 13183-2120 | B-03 | 312B0500 | B-11 | 59031-2096 | B-10 | 92043-2227 | B-03 |
| 11060-2332 | B-03 | 13183-2419 | B-07 | 312B0500 | B-11 | 59041-2063 | B-08 | 92043-2227 | B-03 |
| 11060-2449 | B-03 | 13251-6022 | B-05 | 312G0500 | B-11 | 59051-2112 | B-05 | 92045-2191 | B-09 |
| 11060-2450 | B-08 | 13251-6026 | B-05 | 315B1000 | B-09 | 59051-2113 | B-08 | 92049-2097 | B-03 |
| 11060-2451 | B-08 | 13271-2054 | B-03 | 317B0800 | C-06 | 59051-2114 | B-07 | 92049-2109 | B-06 |
| 12004-2104 | B-06 | 13271-2054 | B-03 | 32085-2089 | C-03 | 59071-2079 | B-03 | 92049-2110 | B-03 |
| 12005-2093 | B-06 | 13304-6007 | B-08 | 32085-2097 | C-06 | 59076-2061 | C-03 | 92049-2111 | B-09 |
| 12009-2067 | B-06 | 14024-2113 | B-07 | 32151-2031-9H | B-03 | 59091-2052-9H | B-08 | 92055-2086 | B-07 |
| 12011-2056 | B-06 | 14024-2205 | C-06 | 39003-2083 | B-11 | 59091-2053 | B-08 | 92055-2175 | C-03 |
| 12016-2056 | B-06 | 14024-2292 | B-03 | 39061-2056 | B-08 | 59256-2057 | B-08 | 92063-2241 | C-03 |
| 12020-2059 | B-06 | 14024-2293 | B-08 | 39062-2051 | B-08 | 59336-2052 | B-08 | 92064-2093 | C-03 |
| 12032-2064 | B-06 | 14037-2128 | B-08 | 39062-2054 | B-08 | 600A1300 | B-07 | 92066-2099 | B-07 |
| 12044-2239 | B-06 | 14083-2051 | B-10 | 39062-2062 | B-08 | 670B1507 | B-09 | 92070-2072 | B-10 |
| 13001-2136 | B-05 | 15003-2528 | C-03 | 39062-2063 | B-08 | 670B2010 | B-04 | 92070-2112 | B-10 |
| 13002-1013 | B-05 | 16004-2051 | C-03 | 39108-2057 | B-06 | 670B2011 | B-07 | 92072-1195 | B-10 |
| 13008-6025 | B-05 | 16014-2077 | C-03 | 39129-2070 | B-11 | 92002-2053 | B-05 | 92072-2003 | B-10 |
| 13025-6007 | B-05 | 16025-2163 | C-03 | 410B0800 | B-04 | 92002-2230 | C-04 | 92072-2003 | B-10 |
| 13025-6008 | B-05 | 16030-2089 | C-03 | 410B1000 | B-09 | 92002-2269 | B-11 | 92093-2092 | C-03 |
| 13029-2108 | B-05 | 16031-2071 | C-03 | 411B0600 | B-11 | 92002-2277 | C-06 | 92093-2093 | C-03 |

